



APM Health

Standardize the collection, integration, modeling, and analysis of disparate data into one unified view



Business challenges

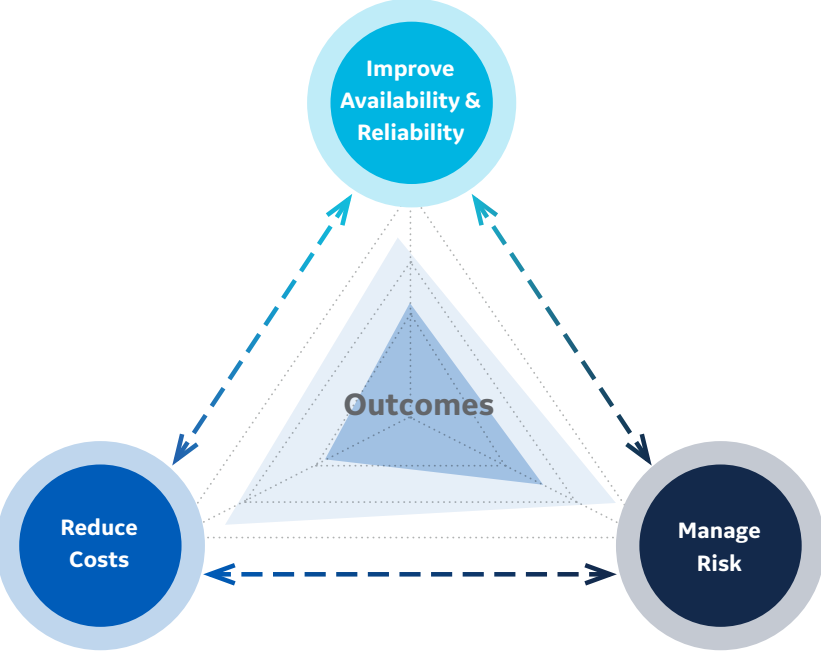
Modern industrial equipment generates gigabytes to terabytes of data every day. When organized, visualized, and analyzed properly, this big data can expose hidden

anomalies and enable pre-emptive action, leading to optimized performance. But without visibility into the data, you can be vulnerable to blind spots and risk.

A continuous loop of improvement

Predix Asset Performance Management (Predix APM) is a suite of software and service solutions designed to help optimize the performance of your assets. Predix APM increases asset reliability and availability while optimizing maintenance costs, mitigating operational risks, and reducing total cost of ownership (TCO). The suite connects disparate data sources and uses advanced analytics to turn data into actionable insights while fostering collaboration and knowledge-management across the organization. Predix APM works across all equipment, all OEMs, and all industries, across the plant, and across the fleet.

Built on Predix Platform, Predix APM gives organizations the flexibility to develop new analytics and applications, making it versatile to meet changing needs.



APM Health

APM Health, a Predix Asset Performance Management (Predix APM) solution, manages data across a variety of assets and systems, creating a comprehensive and validated data repository and unified view related to expected performance at the asset, plant, and enterprise levels. By solving the challenge of data disparity and latency associated with the management of industrial assets, APM Health, provides a real-time view of asset health and condition status, delivers early warning of potential failures, and highlights elevated risk areas.

Beyond gaining a real-time view of asset health, status, and issues—anytime, anywhere (edge, cloud, hybrid), APM Health enables industrial organizations to accelerate time-to-value, automate data integration, and activate data analytics.

APM Health can help you:

- > **Contextualize asset performance**

Bring together data from operational technology (OT) and information technology (IT) systems, alarms, and events to give a contextualized view of asset performance

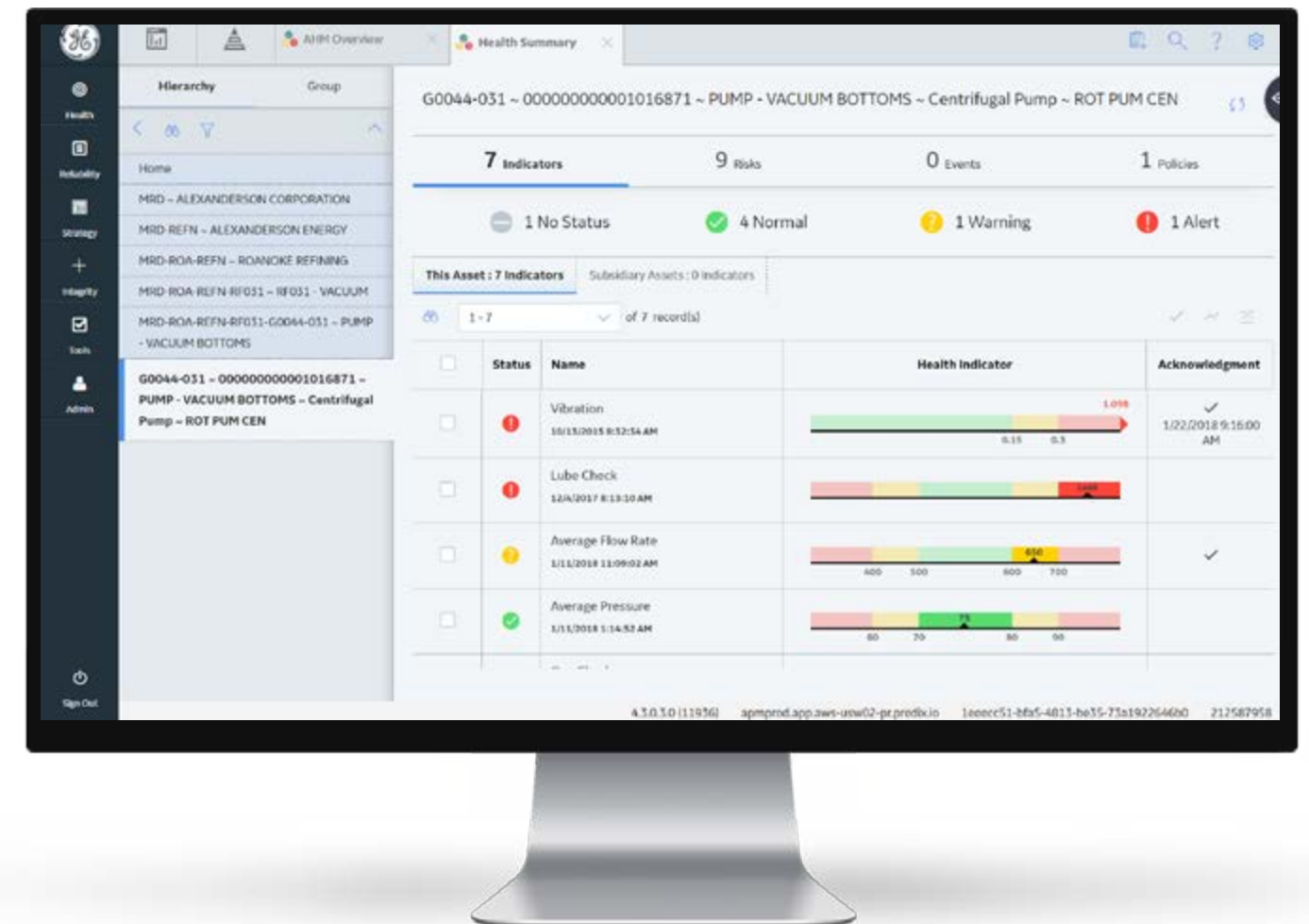
- > **Prevent unplanned downtime, increase utilization**

Detect and diagnose asset performance issues to help prevent unplanned downtime and increase asset utilization

- > **Increase visibility**

Gain increased visibility for better decision making through user-specific dashboards and unified data views that provide operational insights to drive business outcomes

[LEARN MORE](#)



Capabilities of APM Health:

> Health manager

Health manager puts asset conditions in context with known asset risks, alerting users to emerging operating situations and empowering them to prioritize alerts and respond proactively to avoid disruptive unplanned maintenance. Health manager provides the ability to define and manage asset conditions Predix APM. This gives visibility into asset conditions by leveraging existing sources of data in your organization.

The focus is to monitor data that is relevant to asset performance analysis and condition assessment through health indicators, which are defined with high and low criteria for warning and alarm conditions. These health indicators are prioritized in the hierarchical display so that the most critical alerts are given focus for appropriate response.

> Rounds

Rounds puts the power of Predix APM in the hands of field personnel through a mobile application that lets them execute aspects of the asset strategy by monitoring asset performance and capturing condition data electronically in the field. Rounds also enables management of lubrication activities, which is a critical component of an effective reliability program. Rounds integrates equipment strategies into day-to-day operations and surveillance programs and facilitates the efficient assessment of asset performance.

> Calibration management

Calibration management provides tools and work processes for streamlining and managing the calibration of instrumentation and critical plant devices in order to improve the performance of instrumentation systems and optimize the instrument calibration strategies across the entire enterprise.

Whitegate

The 445-MW Whitegate plant is located 25 miles east of Cork, Ireland and provides power to 10% of the country. With Predix APM, Whitegate now has a single, consolidated view of the entire plant. It's turning data into useful information and operating more reliably and efficiently.

[WATCH THE VIDEO](#)



Predix Asset Performance Management

APM Health is one of four Predix APM solutions:

Predix Asset Performance Management | Cloud

- APM Health**
Anytime, anywhere, unified view of your assets' current state and health.
 - Health manager
 - Rounds
 - Calibration management
- APM Reliability**
Predicting equipment issues before they occur.
 - Reliability analysis
 - Digital twin blueprints
 - Predictive diagnostics
 - Root cause analysis
- APM Strategy**
Optimize across availability, reliability, risk, and costs through asset strategies.
 - RCM / FMEA
 - Strategy library
 - Strategy manager
 - Lifecycle cost analysis
- APM Integrity**
Reduce cost and risk for enterprise fixed equipment inspection programs.
 - Risk based inspection
 - Inspection management
 - Thickness monitoring
 - Hazard analysis
 - Management of change

Predix Essentials

- IT/OT Connectivity & Integration**
 - EAM systems
 - HMI/SCADA, Historian, MES systems
 - Asset controllers & sensors
- Edge-to-Cloud Computing**
 - Industrial data fabric
 - Analytics & machine learning
 - End-to-end security
- Monitoring, Analysis & Event Management**
 - Dashboards, interactive data analysis
 - Criticality, alerts, cases, recommendations
 - HMI visualizations & alarms

Predix APM offers multiple benefits, including:

- > Improves reliability, availability, and productivity
- > Optimizes maintenance costs
- > Mitigates risk
- > Maintains technical expertise (tribal and organizational knowledge)
- > Delivers continuous improvement

[Learn more about our complete Predix APM offering](#)

Visit our website to learn more about APM Health.

VISIT OUR WEBSITE





About GE

GE (NYSE: GE) is the world's Digital Industrial Company, transforming industry with software-defined machines and solutions that are connected, responsive and predictive. GE is organized around a global exchange of knowledge, the "GE Store," through which each business shares and accesses the same technology, markets, structure and intellect. Each invention further fuels innovation and application across our industrial sectors. With people, services, technology and scale, GE delivers better outcomes for customers by speaking the language of industry.

Contact Information

Americas: 1-855-YOUR1GE (1-855-968-7143)

gedigital@ge.com

www.ge.com/digital

