

**BAKER
HUGHES**
a GE company



New Unit Inventory

Tyler Beasley
832-954-0627
tyler.beasley@bhge.com

November 9, 2017

© 2017 Baker Hughes, a GE company, LLC
- All rights reserved.

New Unit Inventory

All equipment is new. Full 12/18 month new equipment warranty for functionality



Qty (6) DPC -2803 Non LE
As-Is \$400,000/unit



Qty (3) DPC -2804 Non LE
As-Is \$535,000/unit



Qty (4) Waukesha 16V275GL+
As-Is \$1,100,000/unit



Qty (4) WH76/Waukesha 16V275GL+
As-Is \$3,000,000



Qty (1) MH64/Superior 12SGTD
As-Is \$1,500,000



Superior 16SGTD - \$749,500
Superior 12SGTD - \$549,500

Qty (6) DPC-2803 Non LE Two-Stage, 634HP

COMPONENT	MODEL	BORE
FRAME	DPC-2803 Non-LE	15"
CYL #1	YK11MB	23"
CYL #2	YK11FA	13"



Pricing and Options

As-Is FCA - Oklahoma City, Oklahoma

\$ 400,000

Options:

- Conversion to a DPC-2803LE (parts only) \$ 22,775
- FSR supervision to perform the LE conversion (T&L not included) \$ 4,986
- Convert the existing silencer to a catalyst silencer (required in the U.S.) \$ 13,074
- No-load run test supervision at Packager's facility (T&L not included) \$ 24,970

Notes:

Units are located at Northwest Crane's storage yard in Oklahoma City

Qty (3) DPC-2804 Non LE Two-Stage, 845HP

COMPONENT	MODEL	BORE
FRAME	DPC-2804 Non-LE	15"
CYL #1	YK11CD	6"
CYL #2	YK11CD	6"
CYL #3	YK11S	5.5"



Pricing and Options

As-Is FCA - Houston, Texas

\$ 535,000

Options:

- Conversion to a DPC-2804LE (parts only) \$ 25,775
- FSR supervision to perform the LE conversion (T&L not included) \$ 4,986
- Convert the existing silencer to a catalyst silencer (required in the U.S.) \$ 18,074
- No-load run test supervision at Packager's facility (T&L not included) \$ 24,970

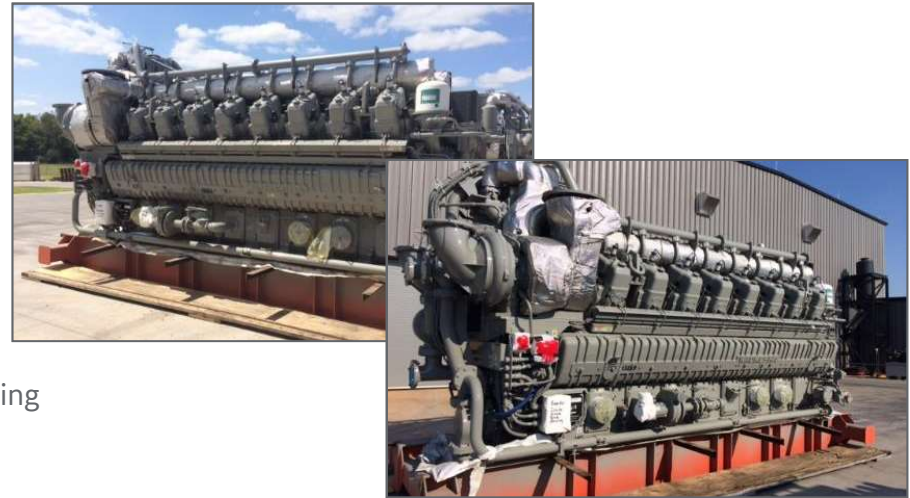
Notes:

Units are located at Port of Houston

Qty (4) Waukesha 16V275GL+, 4820HP

Features:

- 1200A Flexible Engine Connections
- 2300B Heavy Duty Air Filter
- 5040 Air Driven Pre Lube Pump – Engine
- 6650X 100' ESM Customer Interface, Option, Main Bearing
- 6661B 100' HMI harness for off-engine mounting HMI panel
- 7201B Exhaust Y- Transition Two 14" ANSI flanges to a single
- 9801 Engine lifting device- Spreader bar required for proper lifting



Pricing and Options

FCA – Oklahoma City, Oklahoma

\$ 1,100,000

Options:

- 1080B Allows for continuous rating 5000 BHP
- 8000B Front Stub Shaft - 200 HP maximum
- 9209B Starter - TDI 121 Low Pressure (60 psi min, 90 psi max)
- Other modifications available upon request

Upon Request

Upon Request

Upon Request

Notes:

Units are located in Oklahoma City

Qty (4) WH76/Waukesha 16V275GL+

COMPONENT	MODEL	BORE
FRAME	WH76	
CYL #1 & #2	BCF	4.50"
CYL #3 & #5	PDA	7.50"
CYL #4 & #6	QDNA	11.00"

ENGINE MODEL	16V275GL+
CYLINDERS	16
RATED POWER	4820



Pricing

As-Is FCA - Oklahoma

\$ 3,000,000

Notes:

Units are export crated in Tulsa, Oklahoma

Qty (1) MH64/Superior 12SGTD

COMPRESSOR	MODEL	BORE
FRAME	MH64	
CYL #1 & #3	JD	15.75"
CYL #2 & #4	QDN	11.00"

ENGINE MODEL	SUPERIOR 12SGTD
CYLINDERS	12
RATED POWER	2000 (1490)
RATED SPEED	900 RPM



Pricing

As-Is FCA - Oklahoma City, Oklahoma

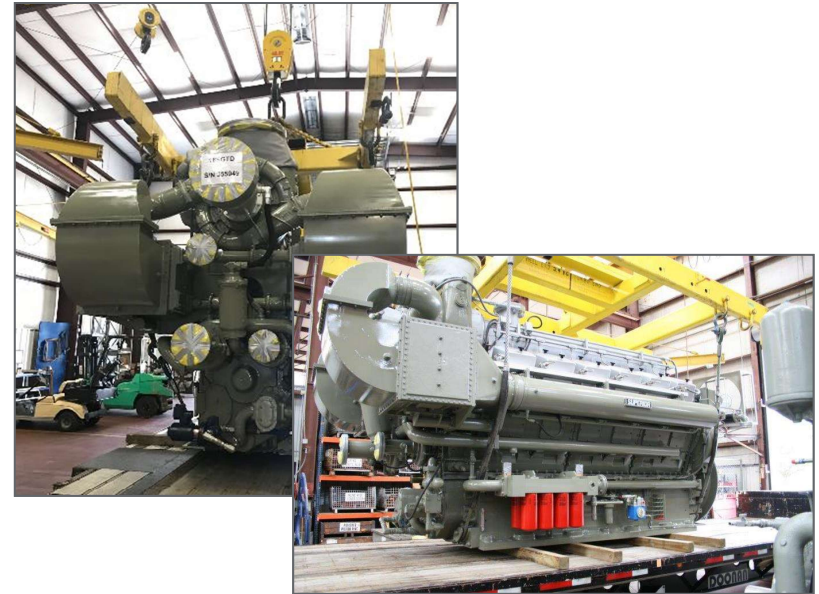
\$ 1,500,000

Notes:

Units are located at BHGE Factory in OKC

Superior 16SGTD & 12SGTD

Model	12SGTD	16SGTD
Cylinders	12	16
Rated Power	2000 (1490)	2650 (1975)
Rated Speed	900 RPM	900 RPM
Dry Weight lbs (kg)	42,500 (19,280)	54,000 (24,494)
Applications	Coal bed methane, gas gathering, gas injection, gas storage/withdrawal, gas transmission/pipeline, process, power generation	



Pricing and Options

Superior 12SGTD with Clean Burn IV
 Superior 16SGTD with Clean Burn IV

\$ 549,500
 \$ 749,500

Options:

- Engine Upgrade Suitable for Zone 2, Group IIA, T1

\$ 64,500

Notes:

Units are located in Houston, TX

BAKER
HUGHES
a GE company

